



SCREWED / SOCKET WELD BALL VALVE

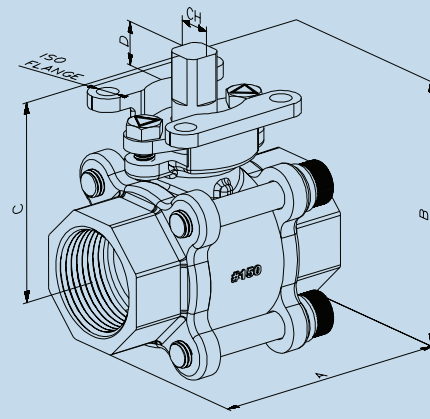


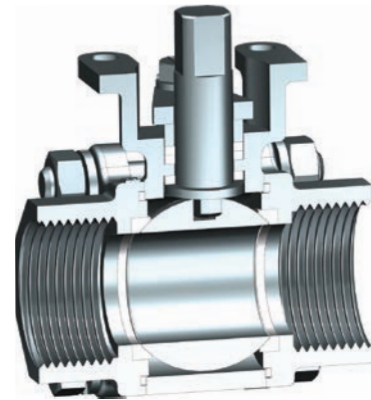
Diagram No. 7.1

SPECIFICATIONS

| | |
|-----------------------|--|
| End Connection: | Screwed end, Socket Weld |
| Size : | DN15 - DN80 |
| Face to Face : | MFG. Standard |
| Pressure Class : | 150# |
| Design Standard : | ASME B16.11, ASME B16.34, API 598, BS EN ISO 17292, ISO 5211 |
| Body Material : | CF8 / CF8M / WCB / CF3M |
| Pipe End Material : | CF8 / CF8M / WCB / CF3M |
| Ball Material : | CF8 / CF8M |
| Body Seal Material : | PTFE / RPTFE / CFT / GFT / PEEK |
| Seat Ring Material : | PTFE / RPTFE / CFT / GFT / PEEK |
| Fastner Material : | SS304 / SS316 |
| Stem Seal Material : | PTFE / RPTFE / CFT / GFT / PEEK |
| Stem Material : | SS304 / SS316 / SS410 |
| Gland Bush Material : | SS304 / SS316 / SS410 |
| Gland Material : | SS304 / SS316 / SS410 |

FEATURES

- ✓ 3PC design twinseal ball valve.
- ✓ Full port ball valve.
- ✓ Blow out proof stem.
- ✓ Floating ball design.
- ✓ Hand lever / Gear / Actuator operated.
- ✓ Balls are precision machined and mirror finished for bubble-tight shut off with less operating torque.
- ✓ Face to Face:- MFG Standard.
- ✓ End Connection:- Screwed / Socket weld (ASME B16.11).
- ✓ ISO 5211 top mounting pad available for easy Uflow make actuator mounting.



SECTION VIEW

DIMENSION

| Model No. | Diagram No. | Pipe (Inch) | A | B | C | CH | D | ISO Flange |
|-----------|-------------|-------------|-------|-----|--------|------|-------|------------|
| BCPC2AS | 7.1 | ½" | 59.50 | 68 | 47.50 | 9.10 | 8.50 | F03 |
| BCPC3AS | 7.1 | ¾" | 57 | 71 | 49 | 9.10 | 8.50 | F03 |
| BCPC4AS | 7.1 | 1" | 75.70 | 90 | 61.50 | 11 | 13 | F05 |
| BCPC6AS | 7.1 | 1½" | 93.60 | 110 | 73.50 | 11 | 12 | F05 |
| BCPC8AS | 7.1 | 2" | 109 | 128 | 82.50 | 11 | 13 | F05 |
| BCPC9AS | 7.1 | 2½" | 139 | 173 | 108.50 | 14 | 15 | F07 |
| BCPCAAS | 7.1 | 3" | 166 | 199 | 123.50 | 17 | 20.50 | F07 |