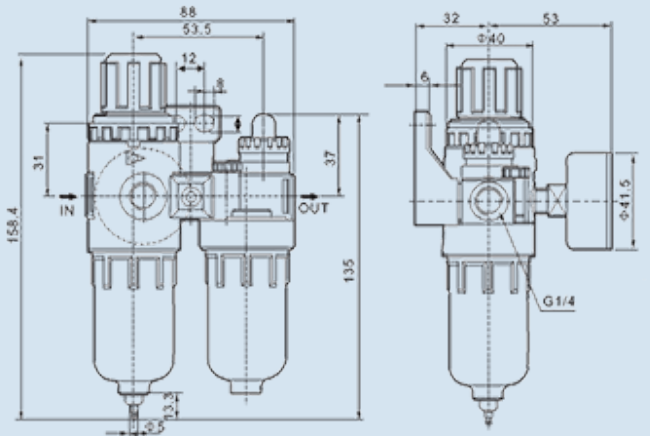
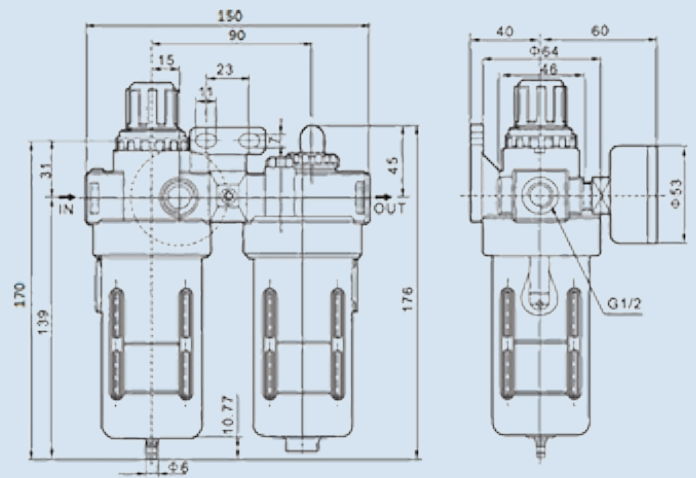




B Series FRL Unit



FC2000



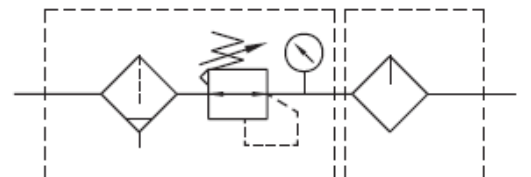
FC4000

SPECIFICATIONS

Function :	Modular Filter Regulator & Lubricator Unit
End Connection :	Screwed
Body Material :	Aluminium Die Cast
Valve Assembly & Seal :	Brass, NBR
Filter Element :	Bronze
Bowl Assembly :	Polycarbonate with/without Metal Bowl Guard
Media :	Air
Max. Operating Pressure :	10 Bar
Working Pressure :	0.5 to 8.5 Bar
Regulator Construction :	Relieving Type
Recommended Lubricant :	Class 1 Turbine Oil (ISO VG32)

TECHNICAL DATA

Model No.	Port Size	Gauge Port	Fluid	Temperature	Filtration Rating	Working Pr. Range	Capacity Filter / Oil Cup
FC2000	1/4" BSP	1/8"	Air	5 to 60° C	40 µm	0.5 to 8.5 Bar	15ml / 25ml
FC4000	1/2" BSP	1/4"	Air	5 to 60° C	40 µm	0.5 to 8.5 Bar	60ml / 90ml



Circuit Diagram

Precautions :

During Installation :

1. Flush Piping before installation.
2. The use of piping adapters will ease installation.
3. The regulator may be installed with the adjustment knob up or down.

Atmosphere :

1. Polycarbonate bowls may get damaged and possibly fail if exposed to synthetic oils, thinner solvents, trichloroethylene, kerosene or other aromatic hydrocarbons.