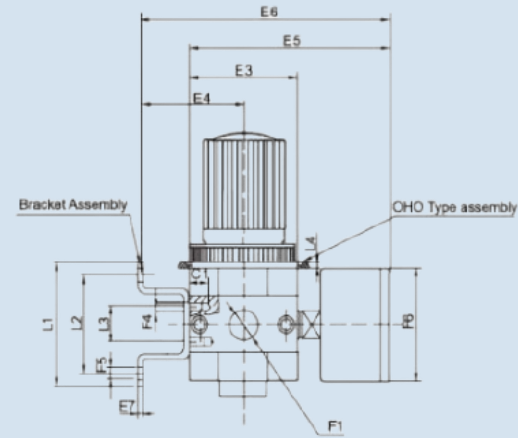
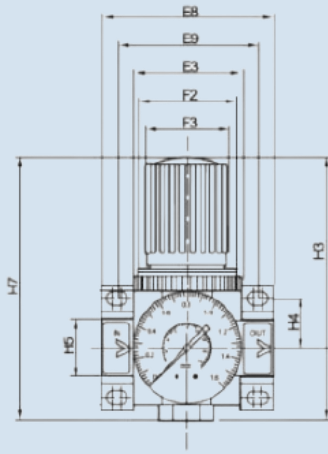


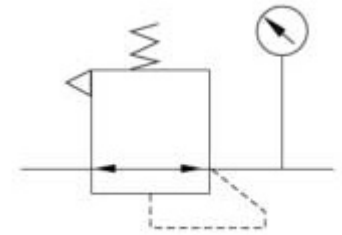


F Series Air Regulator



SPECIFICATIONS

Function :	Air Regulator Unit
End Connection :	Screwed
Body Material :	Aluminium Die Cast
Valve Assembly & Seal :	Brass, NBR
Media :	Air
Working Pressure :	0.5 to 1.2 Bar
Regulator Construction :	Relieving Type



Circuit Diagram

DIMENSION

Port	E3	E4	E5	E6	E7	E8	E9	F1	F2	F3	F4	F5	F6
1/4"	40	39	76	95	2	64	52	G 1/4"	36 X 1.5	31	M4	4.5	40
1/2"	55	47	93	112	3	85	70	G 1/2"	52 X 1.5	50	M5	5.5	52

Port	L1	L2	L3	H3	H4	H5	H7
1/4"	44	35	11	69	17.5	20	96
1/2"	72	60	22	80	24.5	20	96

TECHNICAL DATA

Model No.	Port Size	Gauge Port	Fluid	Temperature	Filtration Rating	Working Pr. Range	Nominal Flow Rate L/Min.*
R02-FST	1/4" BSP	1/8"	Air	5 to 60°C	40 µm	0.5 to 1.2 Bar	1500
R04-FST	1/2" BSP	1/4"	Air	5 to 60°C	40 µm	0.5 to 1.2 Bar	3500

* Condition : Under Standard Pressure